

Krembil Discovery Centre Newsletter

Turning a dream into reality at Toronto Western Hospital

December, 2010 Volume 1, Issue 3



Toronto Western Hospital
University Health Network

KDC Progress – A Year in Review

It's that time of year again when we start to look back at all that has happened in the last 12 months. I thought it would be a great time to review the progress that has been made on the new Krembil Discovery Centre.

Do the Tough Part First

Every construction project as large as this one is going to have its difficulties. KDC was no exception. Although indiscrete to many, the North-West corner of the site proved to be the most difficult phases of construction. This was mainly due to the number of components that all needed to be placed in that corner. This is where the old fuel tanks for the emergency generators were buried and the old service tunnel joined the McLaughlin wing. These all needed to be removed to make way for new foundations and new services. Oh and in-case you forgot we needed to keep all existing hospital services running while we moved, removed and / or replaced the old ones. With this critical task out of the way we can now focus on the (relatively) easier parts.



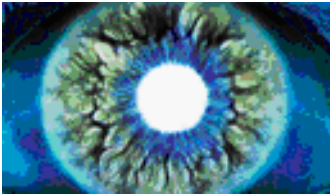
Above: Rendering of completed building from Nassau and Leonard.

Left: Current Site Photo



INSIDE THIS ISSUE

- 1** KDC Progress – A Year in Review
- 1** Do the Tough Part First
- 2** It's not Easy Being Green
- 2** KDC Hotline
- 2** Meet Brent Hayman
- 4** Upcoming...



Krembil Discovery Centre Newsletter

Turning a dream into reality at Toronto Western Hospital

December, 2010 Volume 1, Issue 3



Above: Rendering of completed KDC from Nassau and Bathurst

It's not Easy Being Green

You may remember from previous communications that we have registered the Krembil Discovery Centre with the Canadian Green Building Council under the LEED rating system. LEED stands for Leadership in Energy and Environmental Design. What UHN is striving for is to create a world class research building in a way that also minimizes the impact to the environment. This means, among other things, using recycled materials and locally sourcing materials. Another big component is designing the building to use less energy. This would also reduce the utility bill that UHN pays by hundreds of thousands of dollars per year- so it's a good thing all around. Currently, the design team has created an energy model that predicts how much utilities we are expecting to use. We are happy to report that **we expect KDC to use at least 25 % less energy than a similar building**. This means the design and construction teams must work very closely together but I think everyone agrees it's worth the effort.

KDC Hotline

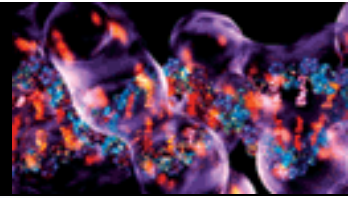
The Krembil Discovery Centre project has a dedicated Hot Line for construction-related concerns. Please don't hesitate to call if there is something you think we need to know. The voice messages get sent to multiple blackberrys to make sure we get back with a response as soon as possible. The number is:

(416) 619 - 0106

Krembil Discovery Centre Newsletter

Turning a dream into reality at Toronto Western Hospital

December, 2010 Volume 1, Issue 3



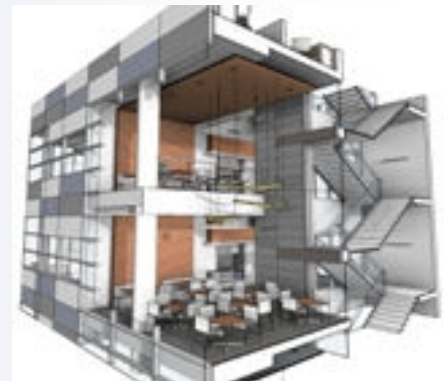
Meet Brent Hayman

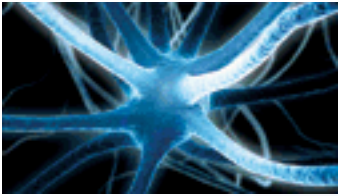
Brent Hayman is the KDC Construction Superintendent. You may have seen him around wearing a hard hat and a big smile. Brent has been in the construction business for 30 years, a role he began after completing a degree at Ryerson in Mechanical Engineering. Brent's role is to oversee all construction in the field related to the Krembil Discovery Centre (KDC). Brent is employed by Ellis Don – one of the three companies making up ABE – in the joint venture to build the KDC. "It's more challenging with the demolition because there are more shut-downs. It's tricky to coordinate but it's going well."

Brent is married and has two kids which keep him busy in his spare time. He can be found at the hockey rink in Oakville, where he lives, or working on his own renovation project at home.



"Sky lobby" – space meant to encourage interaction between research teams





Krembil Discovery Centre Newsletter

Turning a dream into reality at Toronto Western Hospital

December, 2010 Volume 1, Issue 3

Upcoming...

The next phase of construction is referred to as “coming out of the ground”. The concrete and steel that makes up the building structure will be the main focus for the next several months. The first of 2 tower cranes will arrive early in the New Year to perform all of the heavy lifting and keep the project rolling. We will see a ramp up of man power on site and things will change almost daily.

More updates to come...Thanks for your time,

Scott Patterson, P.Eng.
Project Manager
Krembil Discovery Centre
University Health Network - Infrastructure
scott.patterson@uhn.on.ca
Office: 416.603.5800 x 2885
Cell: 647.984.8910

*View from Leonard and
Wales.*

